

DESCRIPTION

The series of AC-DC switching power supplies in a package of 52.4 x 27.4 x 23.5 mm are capable of delivering 20 watts. They are designed for low power IoT, household, industry control application, stand by power application.

FEATURES

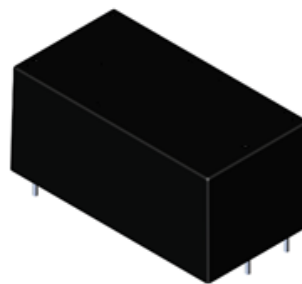
- Universal input 90-264VAC
- 20W power in compact size
- Low standby power
- -30°C ~ 75°C operating temperature
- High efficiency up to 85%
- Continuous short circuit protection
- Meet EN 55032 class B

WATTAGE

Wattage: 20W

DIMENSION

Dimension: 52.4(L) x 27.4(W) x 23.5(H) mm



SAFETY STANDARD APPROVAL

Meet 60950, 62368, 60335

ENVIRONMENTAL SPECIFICATION

Operating temperature: -30°C to +55°C

Storage temperature: -40°C to +85°C

SELECTION GUIDE

Part number	Input voltage	Output voltage	Output current @ full load	Efficiency ⁽¹⁾ (typ.)	Capacitive load ⁽²⁾ (max.)
A20-XE2-05	90V-264V	5 VDC	4000 mA	80%	10000uF
A20-XE2-09		9 VDC	2200 mA	83%	8000uF
A20-XE2-12		12 VDC	1667 mA	85%	5400uF
A20-XE2-15		15 VDC	1333 mA	85%	2700uF
A20-XE2-24		24 VDC	833 mA	85%	1500uF

1. The efficiency measured at full load at 230VAC/50Hz after warm-up.
2. The capacitive load measured at full load at 230VAC/50Hz, Ta=25°C with constant resistive mode.
3. The product information and specifications are subject to change without prior notice.
4. All specifications valid at nominal input voltage(115/230VAC), full load and 25°C after warm-up time unless otherwise stated.

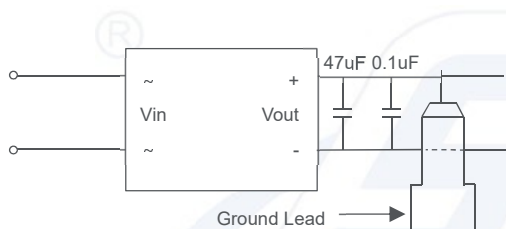
SPECIFICATION

	Parameter	Conditions	Min.	Typ.	Max.	Unit
Input	Input voltage range		90		264	VAC
	Input frequency		47		63	Hz
	No load power consumption				50	mW
	Inrush current	115V			30	A
		230V			60	A
	Start-up time	115V			1	s
	External fuse (or internal)		Internal			
Output	Output voltage accuracy			±2		%
	Operating frequency			100		KHz
	Ripple & noise	20MHz BW full load @47uF+0.1uF			150	mVp-p
	Minimum load		0			%
	Line regulation				±0.5	%
	Load regulation	10%~100%			±1	%
Environment	Operating temperature	Without derating	-30		55	°C
	Storage temperature		-40		105	°C
	Relative Humidity				95	%RH
	MTBF	115VAC @25°C		TBD		Hours
Function	Isolation voltage	1 min., Pri to Sec cut-off current: 5mA	3			KVAC
	Isolation resistance	DC500V	1000			MΩ
	Hold-up time	115Vac/ 60Hz		7		ms
		230Vac/ 50Hz		30		ms
	Over load protection		Automatic recovery			
	Short circuit protection		Continuous, automatic recovery			
	Safety Approvals		Meet 60950, 60335, 62368			
Physical	Dimension		52.4x27.4x23.5 mm			
	Weight		112			g
	Case material		UL94V-0 black plastic			
	Potting material		Silicone			
EMC	EMI	EN55032	Class B			
	ESD	IEC 61000-4-2 air±8kV, contact±6kV	Criterion A			
	Radiated immunity	IEC 61000-4-3, 10V/ m	Criterion A			
	EFT	IEC 61000-4-4, ±2kV	Criterion A			
	Surge	IEC 61000-4-5, ±1kV	Criterion A			

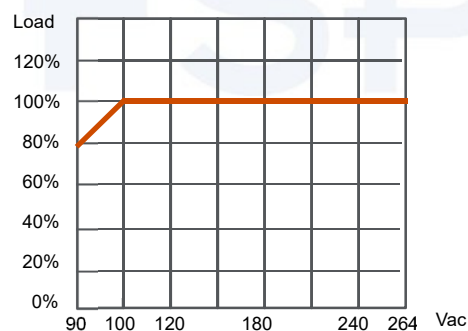
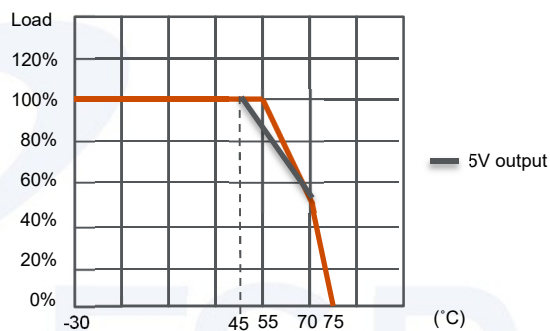
This content is subject to change, please refer to specification for more detail.
FSP reserve the right to change the content without prior notice.

1. All specifications valid at nominal input voltage, full load and 25°C after warm-up time unless otherwise stated.

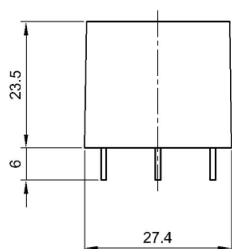
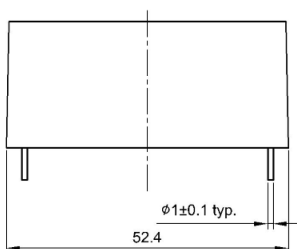
RIPPLE & NOISE



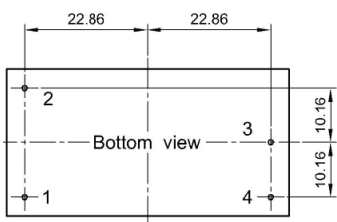
DERATING CURVE



MECHANICAL SPECIFICATION

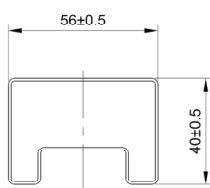


Pin	Single
1	Vin (N)
2	Vin (L)
3	-Vout
4	+Vout



Projection : Third angle projection
Unit : mm
Tolerance : ± 0.5 mm

PACKAGE



UNIT:mm
1 Tube = 16 pcs
Length: 520±1mm

This content is subject to change, please refer to specification for more detail.
FSP reserve the right to change the content without prior notice.