

DESCRIPTION

The series of AC-DC switching power supplies in a package of 40.0 x 33.5 x 22.0 mm are capable of delivering 6 watts. They are designed for industry control application, AC motor control application.

FEATURES

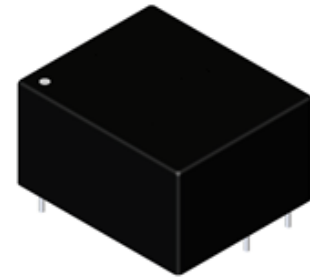
- Universal input 90~264VAC, 47~63Hz
- High efficiency up to 80%
- Continuous short circuit protection
- Over load protection
- Over voltage protection
- Low standby power consumption 0.05W max
- 3750 VAC isolation voltage

WATTAGE

Wattage: 6W

DIMENSION

Dimension: 40.0(L) x 33.5(W) x 22.0(H) mm



SAFETY STANDARD APPROVAL

Meet 60950 / 60335-1

ENVIRONMENTAL SPECIFICATION

Operating temperature: -25°C to +85°C

Storage temperature: -25°C to +85°C

SELECTION GUIDE

Part number	Input voltage	Output voltage	Output current @ full load	Efficiency ⁽¹⁾ (typ.)	Capacitive load ⁽²⁾ (max.)
A06-XE2-3.3	90-264 Vac	3.3Vdc	1500mA	70%	15000uF
A06-XE2-05		5Vdc	1200mA	75%	6800uF
A06-XE2-12		12Vdc	500mA	79%	2500uF
A06-XE2-24		24Vdc	250mA	80%	1400uF

1. The efficiency measured at full load at 115Vac/60Hz and 230Vac/50Hz after warm-up.
2. The capacitive load measured at full load at 115Vac/60Hz, Ta=25°C with constant resistant mode.
3. The product information and specifications are subject to change without prior notice.
4. All specifications valid at nominal input voltage(115/230VAC), full load and 25°C after warm-up time unless otherwise stated.

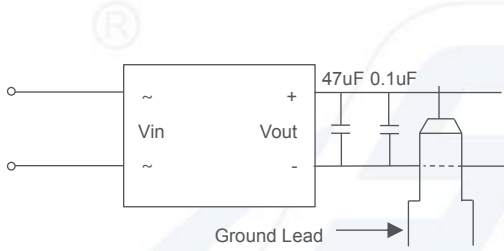
SPECIFICATION

	Parameter	Conditions	Min.	Typ.	Max.	Unit	
Input	Input voltage range	See derating curve	90		264	VAC	
	Input frequency	For AC input	47		63	Hz	
	Inrush current (cold start @25°C)	115VAC				20	A
		230VAC				40	A
	Start-up time					1	S
	No load power consumption					0.05	W
	External fuse (or internal)			Internal wire wound resistor			
Output	Output voltage accuracy				±6	%	
	Line regulation	LL-HL at full load			±1.25	%	
	Load regulation	10%~100% load			±2	%	
	Ripple & noise ⁽¹⁾			100	130	mVp-p	
	Operating frequency				80	KHz	
	Minimum load		0			%	
	Hold up time	115VAC		8			ms
		230VAC		72			ms
Leakage current	264VAC				0.25	mA	
Environment	Operating temperature	With derating	-25		85	°C	
	Storage temperature		-25		85	°C	
	Relative Humidity				95	%RH	
	Vibration			MIL-STD-202G			
Function	Isolation voltage	1 minute, Pri to Sec cut-off current: 5mA	3750			VAC	
	Isolation capacitance			1100		pF	
	Isolation resistance	DC 500V	1			GΩ	
	MTBF (MIL-HDBK-217F)	115VAC @25°C		1800		KHours	
	Short circuit protection			Continuous, Automatic recovery			
	Over load protection			Automatic recovery			
	Over voltage protection			Zener diode clamp			
Safety			Meet 60950/60335-1				
Physical	Potting material		Copolyamide				
	Dimension	(L x W x H)	40.0 x 33.5 x 22.0 mm				
	Weight		38.0			g	
EMC	EMI	EN 55032	Class B				
	ESD	IEC61000-4-2	Criteria A				
	EFT	IEC61000-4-4	Criteria A				
	Surge	IEC61000-4-5	Criteria A				

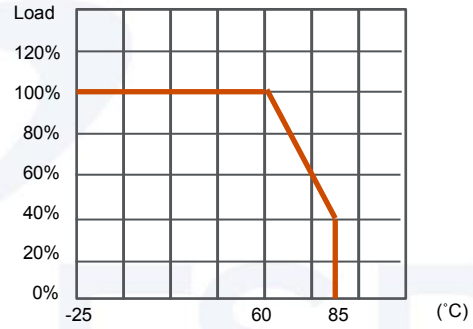
This content is subject to change, please refer to specification for more detail.
FSP reserve the right to change the content without prior notice.

1. Ripple & Noise is test with E-Cap 47uF low ESR and 0.1uF MLCC across outputs at 20MHz bandwidth.
2. All specifications valid at nominal input voltage, full load and 25°C after warm-up time unless otherwise stated.

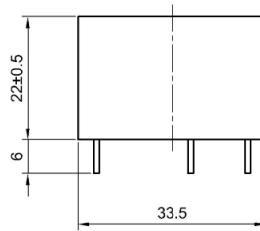
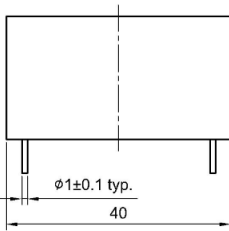
RIPPLE & NOISE



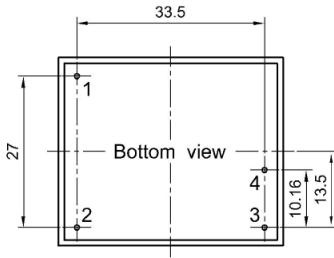
DERATING CURVE



MECHANICAL SPECIFICATION

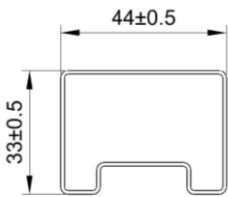


Pin	Single
1	Vin (N)
2	Vin (L)
3	+Vout
4	-Vout



Projection : Third angle projection
Unit : mm
Tolerance : ±0.25mm

PACKAGE



UNIT:mm
1 Tube = 14 pcs
Length:520±2mm